



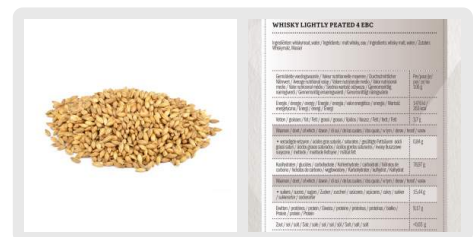
Art. 051.235.9

<https://www.brouwland.com/en/qr/051.235.9>

BREWFERM whisky malt lightly peated 4.0 EBC 1 kg

Whisky malt 2.5-3.7 EBC

The real whisky malt as used by Scottish whisky distilleries. Lightly peated to deliver the characteristic aroma of peat. Ideal for making whisky beer or whisky wort. Phenol content 5,0 – 10,0 ppm. Contains gluten.



Specification

Packing dimensions and weight:

Weight	1.013 kg
Length	24 cm
Height	5 cm
Width	20 cm
EAN code	5425000394860